

# International Bitburger-OPEN 2006



sanctioned by



presented by

**1.BC Saarbrücken**  
**Bilschmisheim**

**24th to 29th October 2006**

**venue:** Saarlandhalle, Saarbrücken  
Im Ludwigspark  
66113 Saarbrücken  
Surface of 1500m<sup>2</sup>  
3500 seats  
fully airconditioned

**prize-money:** **50.000 US\$** will be divided according to IBF

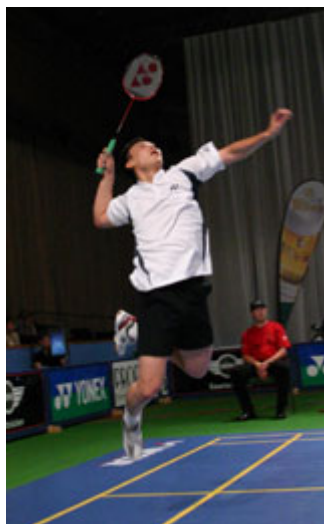
Competition Regulations 27.4. Income tax may be deducted according to German tax regulations.

**main-draw:**

men's singles: 56 + 8  
women's singles: 28 + 4  
men's doubles: 28 + 4  
women's doubles: 28 + 4  
mixed doubles: 28 + 4

**entries closing date:** September 25th 2006

**entries only to** Koordinationsbuero Bitburger-OPEN  
Hermann-Neuberger-Sportschule 1  
D-66123 Saarbrücken  
Tel.: +49 681 3879 452  
Fax.: +49 681 3879 454  
eMail: [entries@bitburger-open.de](mailto:entries@bitburger-open.de)



On our website you will find an entry-form.

Only entries sent to the office will be accepted. Entries must be in writing (fax or e-mail) in accordance with IBF-Competition-Regulation 5.4, entries can only be accepted, if they are made by the national federation in which the corresponding players are members. Pleas download the form from our

homepage and send it to us. Entry lists will be published under [www.bitburger-open.de](http://www.bitburger-open.de) after the close of entries and successively updated, separated to main tournament, qualification and stand-by list.

**world-ranking-points:** **This tournament carries WR-points according to 2\*-WGP.**

**entry-fees:** 25 Euro in single-disciplines, per participant  
20 Euro in doubles-disciplines, per participant

Entry fees are due to permission to the tournament and must be paid to the Organizer before starting the tournament. If no payment occurs, players will be excluded. You can pay fees in the coordination office (see annexed map).

**withdrawals:** In kind of cancellation (e.g. due to injury), the organizer is to be informed immediately. If a cancellation is made after the draw within seven days before the first scheduled match, a withdrawal fee of US \$250 will be charged, according to WGP-Regulations 9.

**referee:** tbc

**deputy:** tbc

**scoring:** according to IBF-laws

**clothing:** The referee will apply the IBF Competition Regulations 19 to 22. The player's name on the back of his shirt close to the top is mandatory.

**advertising:** IBF Competition Regulations 23 will be applied. The referee's decision will be final.

**team-manager-meeting:** You will get the schedule for meetings at the Infocenter.

**official shuttle:** Yonex AS50

**drug-testing:** There may be drug testing. Your continued cooperation is requested.

**time-schedule:** **Qualification**  
**Tuesday, 24th October 2006**  
earliest start of play at 9 a.m.

**Main draw**  
**Wednesday, 25th October**  
from 09.00 h  
1st Round MS, WS, MD, WD and MX

**Thursday, 26th October**  
from 10.00 h  
2nd Round MS, WS, MD, WD and MX  
3rd Round MS

**Friday, 27th October**

from 13.00 h

Quarter-Finals

21.30 h Players ´party

**Saturday, 28th October**

from 15.00 h

Semifinals

**Sunday, 29th October**

from 12.00 h

Finals

**complete tournament-guide and invitation:** [www.bitburger-open.de](http://www.bitburger-open.de)